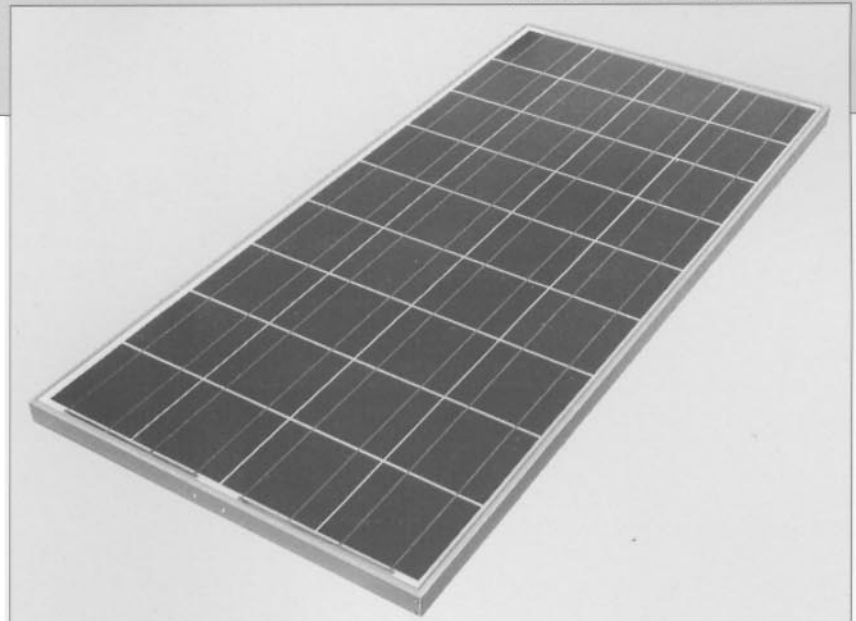




KC120-1

HIGH EFFICIENCY MULTICRYSTAL PHOTOVOLTAIC MODULE

TYPICAL OUTPUT 120 Wp



HIGHLIGHTS OF KYOCERA PHOTOVOLTAIC MODULES

Kyocera's advanced cell processing technology and automated production facilities have produced a highly efficient multicrystal photovoltaic modules.

The conversion efficiency of the Kyocera solar cell is over 14%.

These cells are encapsulated between a tempered glass cover and an EVA pottant with PVF back sheet to provide maximum protection from the severest environmental conditions.

The entire laminate is installed in an anodized aluminum frame to provide structural strength and ease of installation.

APPLICATIONS

- Microwave/Radio repeater stations
- Electrification of villages in remote areas
- Medical facilities in rural areas
- Power source for summer vacation homes
- Emergency communication systems
- Water quality and environmental data monitoring systems
- Navigation lighthouses, and ocean buoys
- Pumping systems for irrigation, rural water supplies and livestock watering
- Aviation obstruction lights
- Cathodic protection systems
- Desalination systems
- Recreational vehicles
- Railroad signals
- Sailboat charging systems

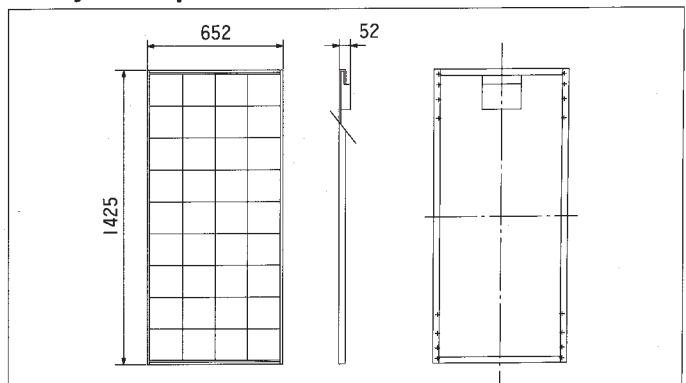
SPECIFICATIONS

■ Electrical Specifications

MODEL	KC120-1
Maximum Power	120 Watts
Maximum Power Voltage	16.9 Volts
Maximum Power Current	7.10 Amps
Open Circuit Voltage	21.5 Volts
Short-Circuit Current	7.45 Amps
Length	1425mm (56.1in.)
Width	652mm (25.7in.)
Depth	52mm (2.0in.)
Weight	11.9kg (26.2lbs.)

■ Physical Specifications

(Unit: mm)

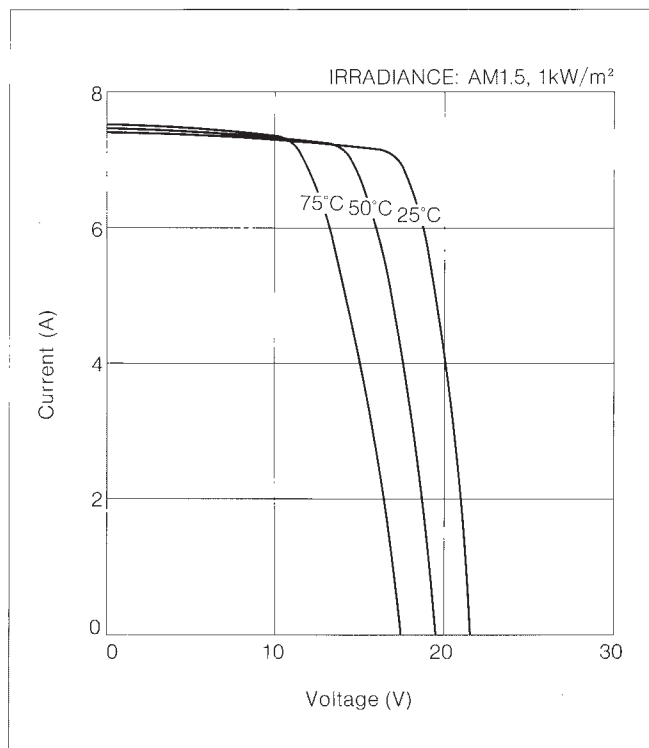


Note: The electrical specifications are under test conditions of Irradiance of 1kW/m², Spectrum of 1.5 air mass and cell temperature of 25°C

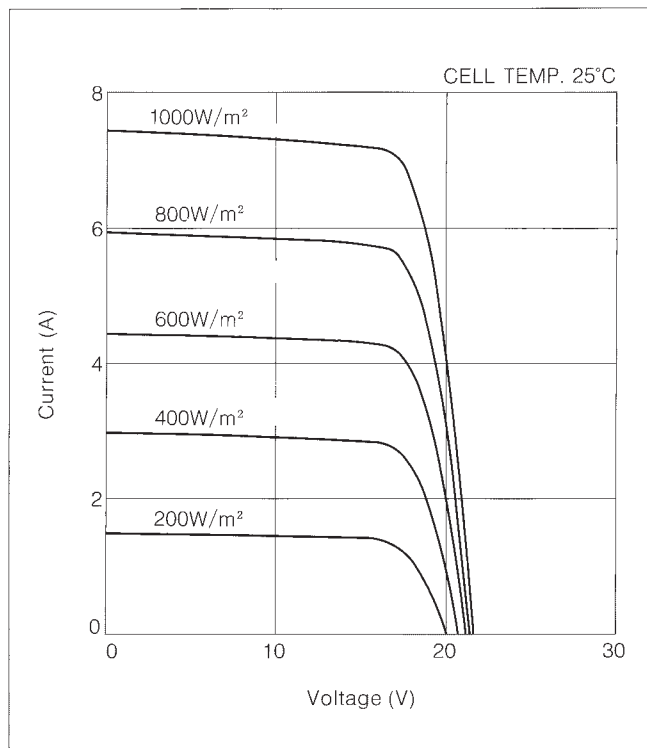
Kyocera reserves the right to modify these specifications without notice.

ELECTRICAL CHARACTERISTICS

Current-Voltage characteristics of Photovoltaic Module KC120-1 at various cell temperatures



Current-Voltage characteristics of Photovoltaic Module KC120-1 at various irradiance levels



QUALITY ASSURANCE

Kyocera multicrystal photovoltaic modules exceed government specifications for the following tests.

- Thermal cycling test
- Thermal shock test
- Thermal/Freezing and high humidity cycling test
- Electrical isolation test
- Hail impact test
- Mechanical, wind and twist loading test
- Salt mist test
- Light and water-exposure test
- Field exposure test

Please contact our office to obtain details without hesitation.



KYOCERA CORPORATION

■ KYOTO KARASUMA OFFICE

SOLAR ENERGY DIVISION
680 Karasuma-Bukkoji-Sagaru,
Shimogyo-ku, Kyoto 600, Japan
Phone: (075) 344-8241 Telex: KCCP J 65540
Telefax: (075) 344-8240

● KYOCERA AMERICA INC.

8611 Balboa Avenue, San Diego, California 92123, U.S.A.
Phone: (619) 576-2647 Telex: ITT 4723069
Telefax: (619) 569-9412

● KYOCERA FINECERAMICS GmbH

Fritz Müller Straße 107, D-73730 Esslingen, F.R.G.
Phone: (0711) 9393417 Telefax: (0711) 9393450

● KYOCERA (HONG KONG) LTD.

Room 803, Tower 1 South sea Centre, 75 Mody Road,
Tsimshatsui East, Kowloon Hong Kong
Phone: (02) 7237183 Telefax: (02) 7244501

● KYOCERA (HONG KONG) LTD. TAIPEI BRANCH

Suite 532, Asia Enterprise Center
602, Min Chuan E. Road Taipei, Taiwan
Phone: 7183595 7183596 Telex: 13724 KYOCETWN
Telefax: 7183587

● KYOCERA (HONG KONG) LTD. SINGAPORE BRANCH

100 Beach Road, # 22.01/03
Shaw Towers, Singapore 0718
Phone: 2917900 Telex: 20133 Telefax: 2918468